



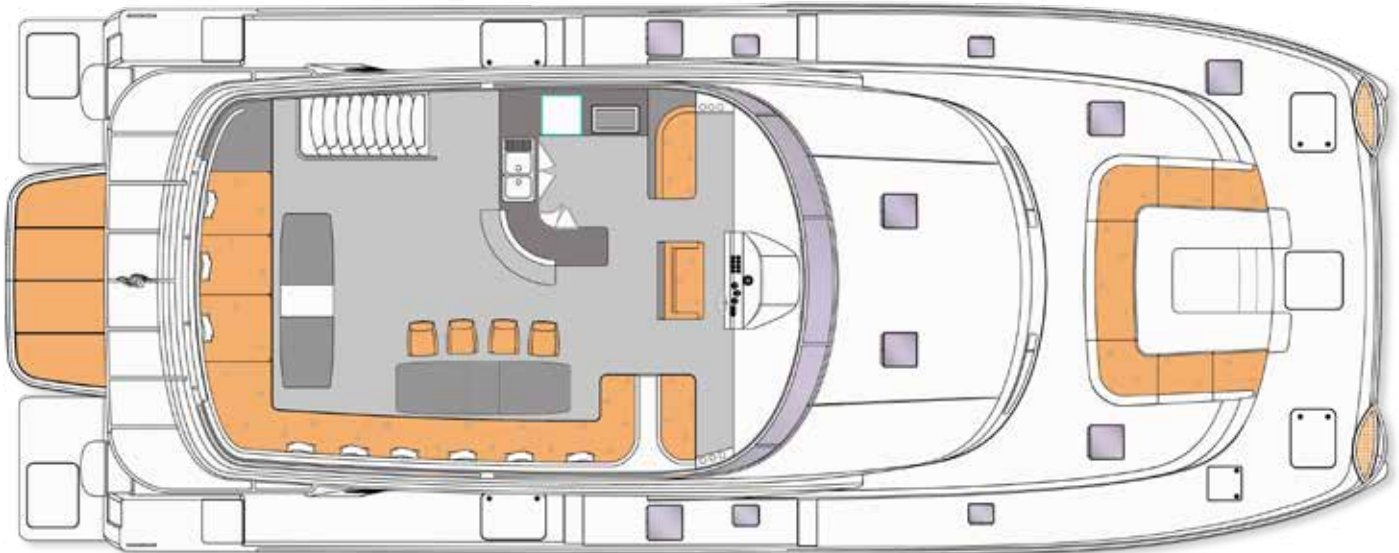
**THE HELIOTROPE 70**  
 Open Sky  
 8 cabins

With her Modern looks, this luxury Yacht Heliotrope 70 is designed for long distance cruising while living comfortably on board. With both fly bridge and salon being very spacious she also offers ample opportunity to entertain.

**General Specifications**

Overall length: .....	21.51 m / 70.57 ft.
Overall beam: .....	8.57 m / 28.12 ft.
Draught (Max): .....	1.3 m / 4.27 ft.
Air Draft: .....	6.57 m / 21.56 ft.
Displacement (MOC): .....	43,225 kg / 95,295 lbs.
Displacement (LDC): .....	55,000 kg / 121254 lbs.
Standard Engines: .....	650 hp / 478 kW
Maximum speed at MOC: .....	18..20* kts
Maximum speed at LDC: .....	10..12* kts
Maximum Range: .....	3,000 NM
Fresh water: .....	2 x 1,500 L / 793 US gal (+/-)
Diesel: .....	4 x 1,500 L / 1,585 US gal (+/-)
Grey water tanks: .....	2 x 300 L / 86 US gal (+/-)
Black water tanks: .....	2 x 300 L / 86 US gal (+/-)
CE Certification: .....	EU RCD Category A 'ocean'
Architect: .....	Albatross Marine Design
Builder: .....	Bakricono Shipyard





*Flybridge area with Helm, BBQ, Galley & Bow seating*

### Overview of the vessel

- 2 x Caterpillar C8.7 - 650 hp Diesel engines with shaft drive, electronic control, propellers and hydraulic steering system
- Woodwork using certified Teak, White Oak and Asian Mahogany
- Saloon and Cabins with wood vinyl flooring
- Marine vinyl ceilings and skirting
- Choice of upholstery with Quick dry foam cushions & bed mattress throughout the yacht
- Personalized metallic hull color

### Helm & Navigation

- C-Zone electronic multifunction display for monitoring and controlling all electrical systems onboard
- Full engine instrumentation with digital display module
- Complete power assisted hydraulic steering system and complete electronic engine controls
- Heading compass
- Navigation lights control
- Large storage compartment under helm with ease of access to console instruments
- Cuddy storage box for holding binoculars and other equipment
- Anchor winch control

### Pantry

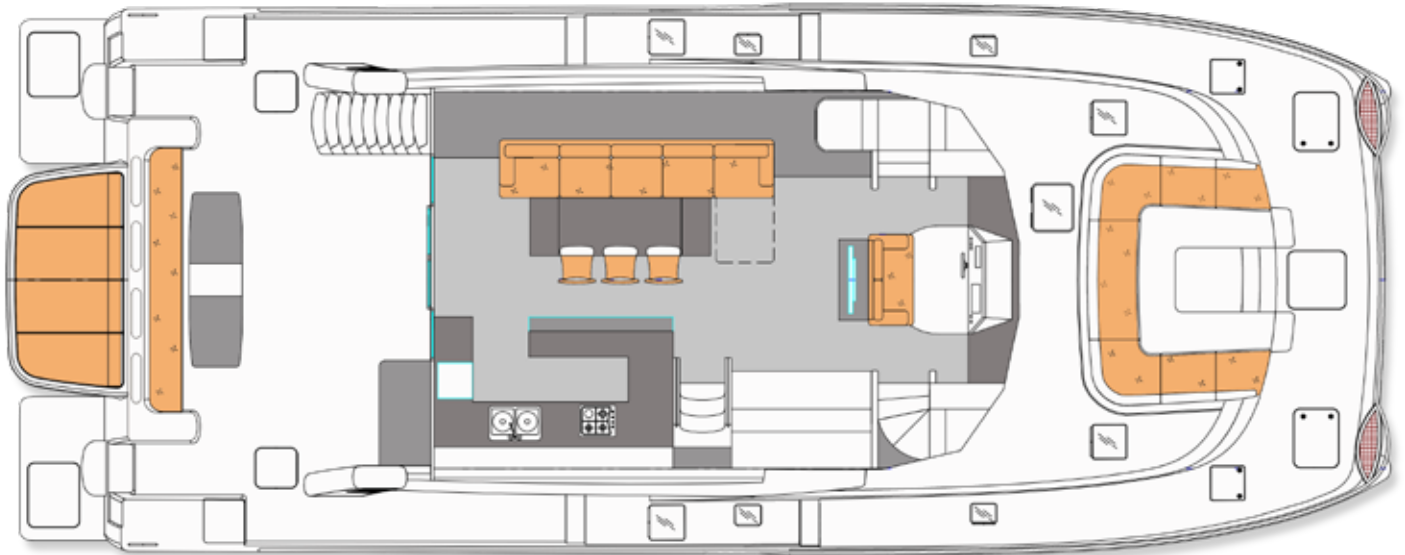
- Double stainless steel sink with mixer tap
- Corian solid surface countertop
- Raised wet bar
- Under counter storage locker
- AC power outlet socket
- BBQ
- Beverage fridge
- Ice maker

### Flybridge

- Area: 52.00 sqm
- Access via straight staircase from Cockpit
- Pilot seat for 2 persons
- Forward facing sofa seat for 4 persons
- Large sofa for 16 people, tables and collapsible center piece
- 7 large under seat waterproof storage with locker
- Storage under stern seating area for safety equipment and more
- 316 Stainless steel handrail
- 316 Stainless steel framed inversed windshield with windows to deflect wind and reflections
- Flagpoles for three flags
- LED Navigation Lights (Port, Starboard, Stern, Anchor and Running)
- LED main lighting
- Fully covered fiberglass hardtop with Radar Arch
- Various glass holders
- See through window located at Stern of the FB ceiling
- Large Open Sky window at mid FB ceiling



*View of Flybridge*



*Galley, Saloon and Helm*

### Cockpit

- Area: 35.00m (377 ft)
- 2 x Solid teak swim decks
- Solid teak boarding steps and steps to side decks
- Solid staircase with teak steps to fly bridge
- 6 seat sofa with backrest and under-seat stowage
- Handcrafted teak cockpit table
- Hella Marine LED exterior lighting
- Enclosed shoe rack under staircase to fly bridge
- Work counter with large storage locker
- Large side storage lockers
- Easy lifting deck hatches to engine compartments (port & starboard) with gas struts
- Access to wide side decks
- Transom shower with water mixer tap
- Foldable Stainless Steel swim ladder
- Self-Draining Cockpit
- Fender Storage
- AC power outlet socket, IP55 waterproof

### Fore deck & Side decks

- Vertical windlass, bow roller and 45 kg (100 lbs.) Delta anchor (Below deck for safe un-obstructed walkway)
- Main locker for access to anchor gear
- Forepeak storage compartments, with easy opening gas struts
- Foredeck lounge
- 316 Stainless Steel handrail, body height for maximum safety and child safe
- 13 Watertight opening deck hatches for natural light and ventilation
- Bow romantic seating integrated in handrail
- 8 x Stainless Steel Mooring Cleats
- 316 stainless steel deck hardware

### Saloon

- Area: 53.00m
- Teak/oak floor
- Sofa seating for 8 people
- Handcrafted teak wood dining table for 6 people
- High Wall display cabinet
- 20 LED dim controllable lighting
- Vinyl ceiling
- Large 316 Stainless Steel curved roller door with tempered glass for access to cockpit
- 270 degree panoramic view with tempered glass safety windows
- Stairs leading to master cabin and guest cabins

### Galley

- Double Stainless Steel sink with mixer tap
- 6 Storage cupboards
- 10 storage drawers
- Concealed waste bin
- 4 plate Induction stove
- Multi door refrigerator/freezer
- AC power sockets
- Kitchen extraction fan above stove
- Corian Solid Surface counter top, with draining grooves
- LED ceiling lighting

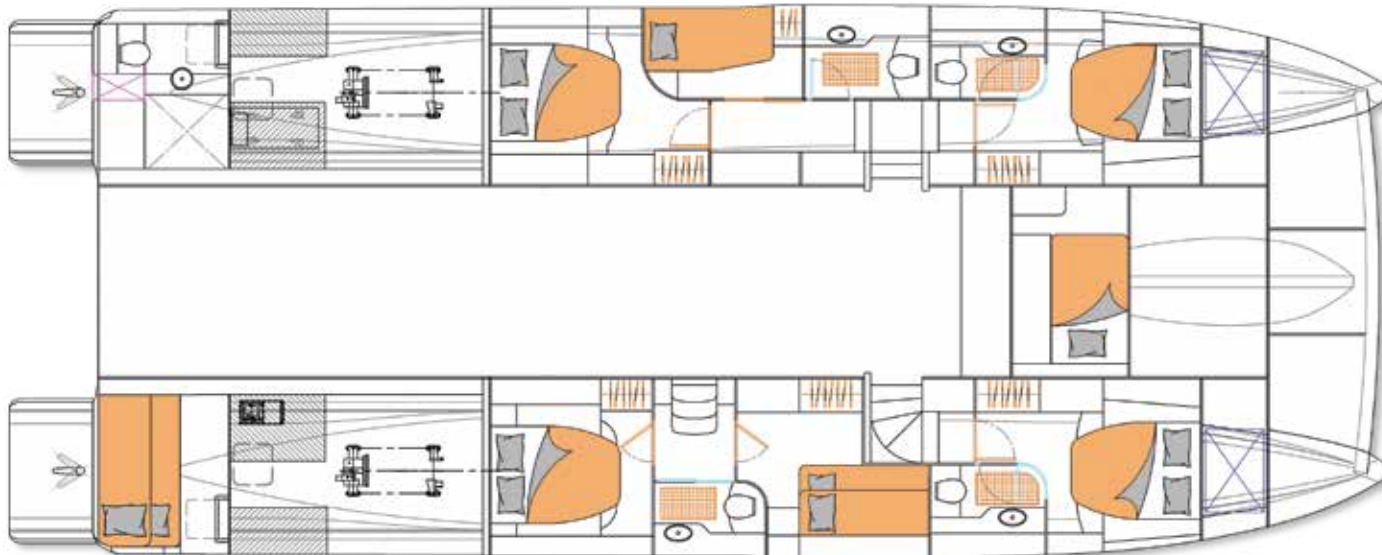


*View of Galley*



*View of Saloon*





Cabins area

**Master cabin x 2 & Guest cabin**

**Cabins**

- King size bed mattress with cushions
- Large Ocean view window
- Large storage inside headboard
- Hanging locker with shelves
- Deck hatch for natural light & ventilation
- LED Ceiling lighting & Bedside reading lamps (Bi color)
- Curtain blinds
- Vanity table with mirror and sofa seat
- AC power outlet socket

**Bathrooms**

- Deluxe electric marine toilet with an integrated macerator system
- Private door leading to cabin
- Corian Solid surface counter top with sink
- Washing basin with single lever mixer tap
- Large enclosed shower
- Vanity locker with mirror
- Under counter stowage
- Shampoo and sundries shelf
- Tissue holder & towel rails
- Opening Port light and deck hatch for natural light & ventilation
- Automatic shower sump box
- LED down lighting
- Concealed toilet paper
- AC power outlet socket for shaver/hair dryer
- Concealed waste bin

**Guest and Party toilets**

- Deluxe electric marine toilets
- Washbasin with single lever mixer tap
- Under counter storage
- Concealed waste bin and toilet paper
- Vanity mirror with cabinet
- Hand towel railing
- AC power outlet socket
- Opening viewport and deck hatch for natural light and ventilation

**Guest cabin x 4**

**Cabin**

- King size bed mattress with cushions
- Large Ocean view window
- Storage space under bed
- Hanging locker with shelves
- Deck hatch for natural light & ventilation
- LED Ceiling lighting & bedside reading lamps (Bi-color)
- AC power outlet socket

**Shower**

- Height adjustable shower
- Seat
- Opening viewport for natural light and ventilation

**Crew cabin x 2**

- 1 captain cabin at bow between the hull
- 1x2 crew cabin at starboard stern
- 1 WC shower at stern port side



Master Cabin

### Water system

- 2x Custom made Stainless steel fresh water tanks, total 3,000 liter (790 US gal)
- 2x 18 Liter per minute (237 GPH) automatic pressure pumps
- 2x water surge dampers
- Hot water calorifier
- Stern shower at swim platform
- Fresh water wash down at anchor compartment
- Low level water alarm through C-Zone
- Grey water tanks for shower and sinks
- Black water tanks for toilets
- Discharge managed through C-Zone
- Stainless steel deck fillers, discharge connectors and vents
- Water transfer between fresh water tanks
- 8 Automatic bilge pumps with manual override, integrated with C-Zone for control and monitoring

### Engine Compartments & Equipment

- 2 x Caterpillar C8.7 - 650 hp
- 5 Blade propellers for optimum efficiency, performance and comfort
- Shafts with stern tubes, couplings and dripless shaft seals
- Self-Supporting rudders with tubes and assemblies with hydraulic steering cylinders
- Fuel water separators
- Engine room insulated and soundproofing
- Continues duty, forced engine room ventilation
- Raw water strainers, with clear lids for easy inspection
- Water cooled exhaust system with Water lock for noise reduction and safety
- Integrally molded engine beds for strength and vibration absorption
- Watertight engine room bulkheads
- Engines flexibly mounted
- Engine room lighting in all areas
- Cathode protection

### Fuel System

- 4x Custom made Stainless Steel fuel tanks, total 6,000 Liters (1,585 US gal)
- Stainless steel deck fuel fillers and breathers
- Fuel/water separators for added safety and ease of maintenance
- Remote fuel shut offs from outside engine room
- Fuel tank monitoring with C-Zone
- Fuel transfer between tanks, with easy operation through C-Zone



Cockpit

### Electrical System

- Air-conditioned system of 150.000 Btu
- C-Zone integration of all DC and AC Systems for control, monitoring and management
- Charger/Inverters fitted for power supply, management and distribution 24 Volt
- AGM deep cycle batteries
- Heavy duty batteries for engines and generator starting
- Battery isolation switches installed with remote control at any C-Zone interface
- 24v to 12V converter for certain equipment 120 / 220 Volt
- 45 kW water cooled generator with Sound Shield
- Mastervolt Mass Combi Ultra 3500 Watt inverter
- Stainless steel shore power connections and cables
- Generator / Shore power residual current devices
- Reverse Polarity protection
- AC power outlets in all cabins, toilets, galley, office, flybridge, engine rooms

### Fire Fighting & safety

- Dedicated space for canister life rafts
- Automatic engine compartment fire suppression system with engine shutdown, helm station alarms and manual release.
- Collision bulkheads in bow, and watertight engine compartments
- Keel with shoe for protecting propellers and rudder from nets, ropes and sea bottom.
- 45kg Lewmar Delta anchor

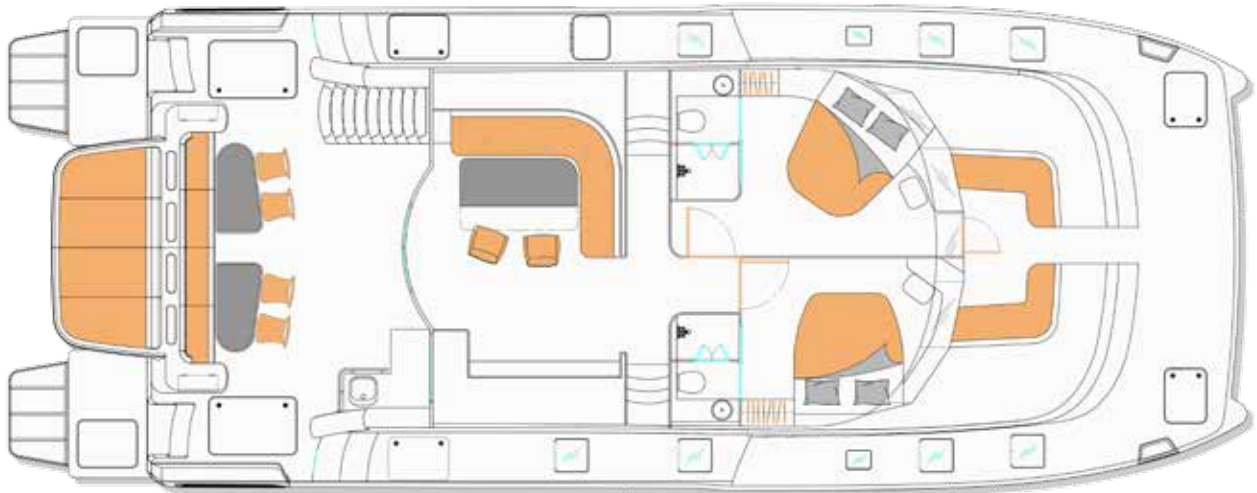
### Construction

- Multiaxial FRP Construction using Bisphenol A-type Epoxy Vinyl Ester resin for excellent resistance to corrosion, organic/ inorganic acids, alkalis, oxidizing chemicals and salt solutions, by infusion
- Isophthalic gelcoat for high color stability and osmosis resistance
- Vacuum infused core sandwich
- Vacuum infused bulkheads
- Watertight collision bulkheads in forepeak for added safety
- Watertight engine room compartments
- High Quality Tempered Glass windows
- Marine Grade 316L Stainless Steel handrails, deck fittings and hardware

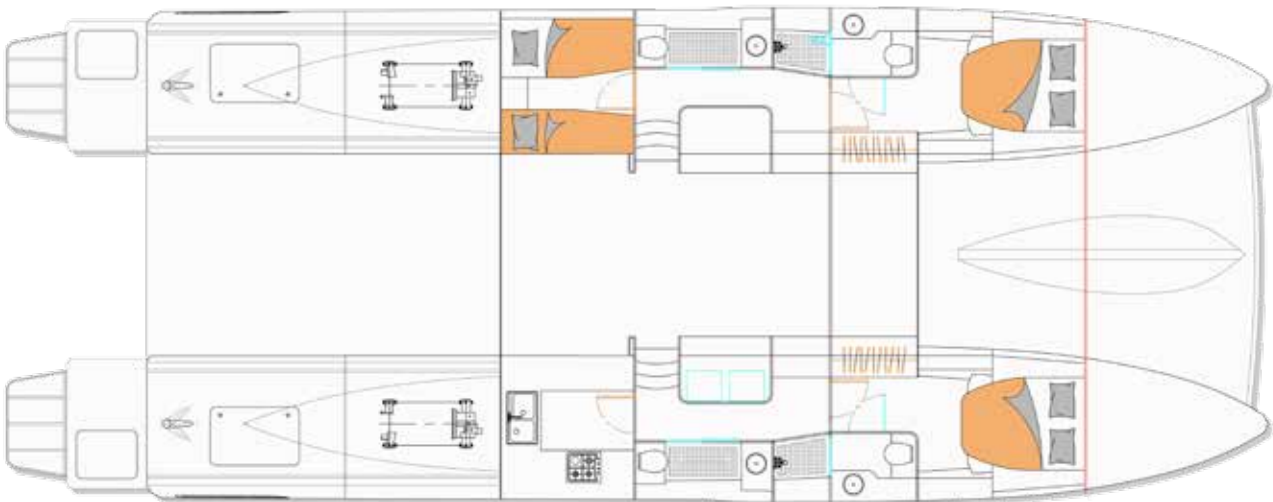
### Additional Items (Included)

- Owner's manual supplied
- Engine and equipment manuals
- Boat hook
- Ship's document case
- Anti-Corrosive Epoxy primer for protection against Osmosis

**OPTION "PENANG"**

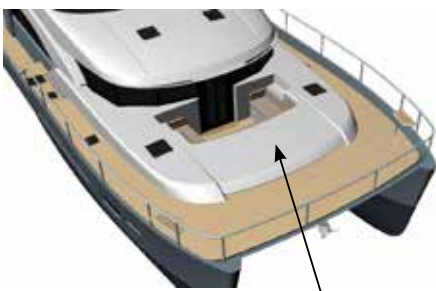


*"Penang" 5 cabins Saloon view  
Possibility to have "Dubai" Saloon*



*Penang - 5 cabins HULL  
Possibility to add 1x2 crew cabin at Stern*

**OPTION JET SKI STORAGE**



*H70 V1 jet ski storage + walk through saloon*



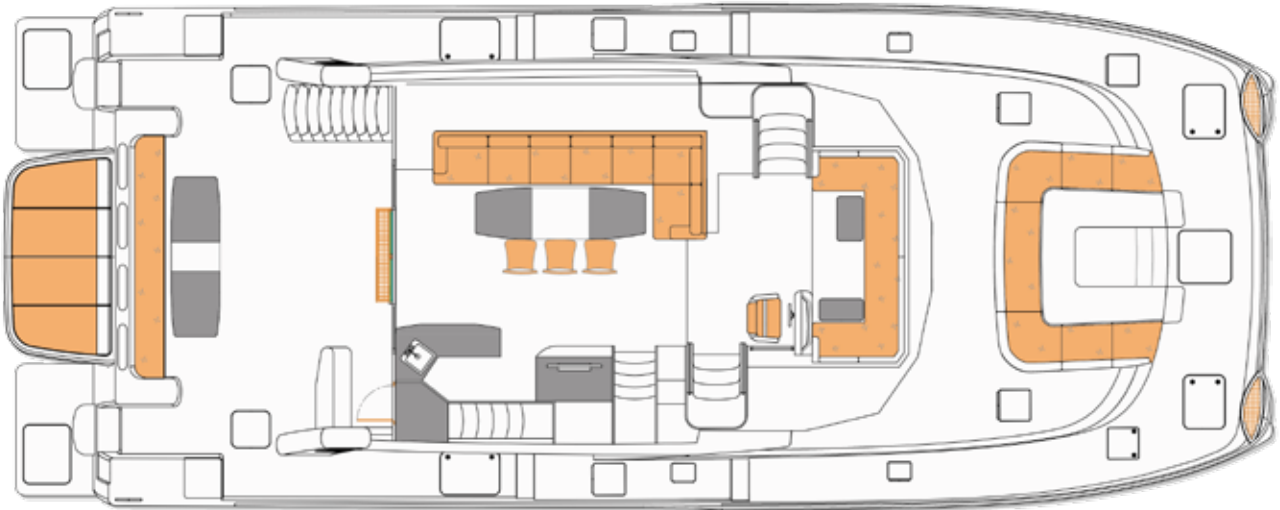
*H70 V2 no jet ski storage*



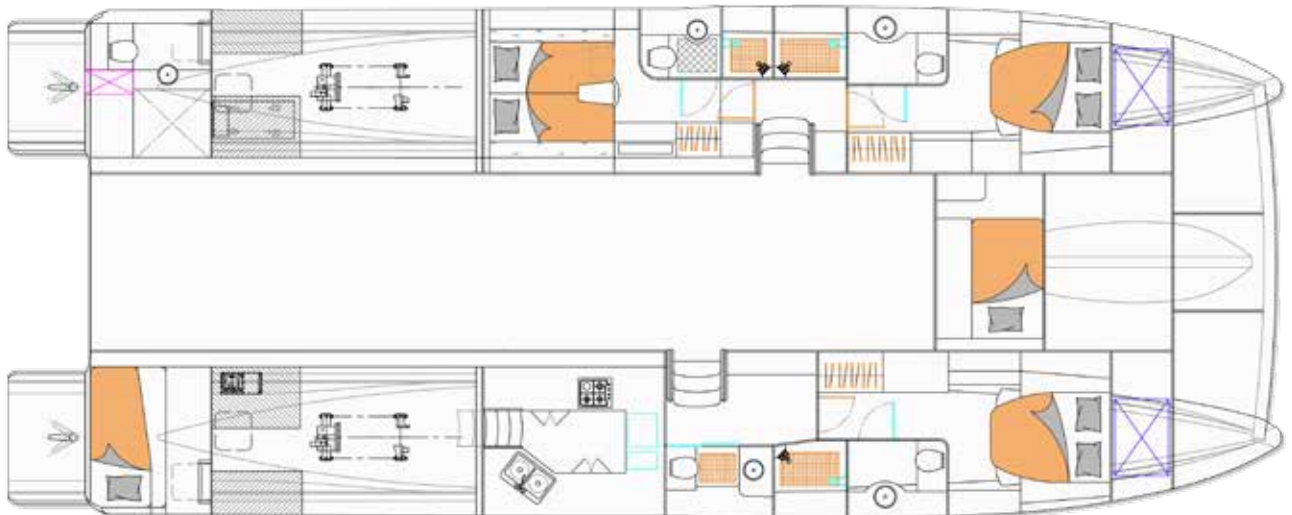
*H70 V3 jet ski storage  
below the cushions*



OPTION "DUBAI"



"Dubai" - Saloon view



"Dubai" - 3 Cabins & 2 Crew 2+1



Stern platform with tender protected from weathering

