



VICEM 67 CRUISER



Principal Dimensions

Length Overall	: 21,57 m	70' 9"
Length Hull	: 20,83 m	68' 4"
Beam Overall	: 5,50 m	18' 1"
Draft Max @ 100% Loading	: 1,83 m	5' 8"
Displacement @ 20% Loading	: 48.900 kg	107.806 lbs
Displacement @ 100% Loading	: 55.900 kg	123.238 lbs
Number of Passengers	: 6 guests in 3 staterooms	
Number of Crew	: 2 crew in 1 crew accommodation	

Performance

Maximum Speed	: 21.0 knots @ 20 % loading condition
Cruising Speed	: 15.5 knots @ 20 % loading condition

Capacties

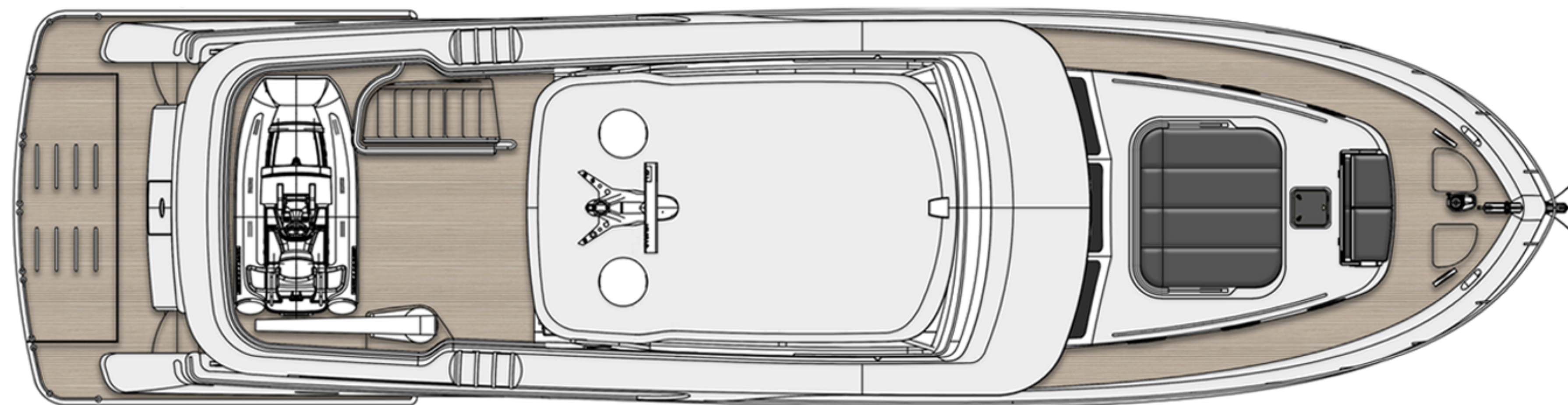
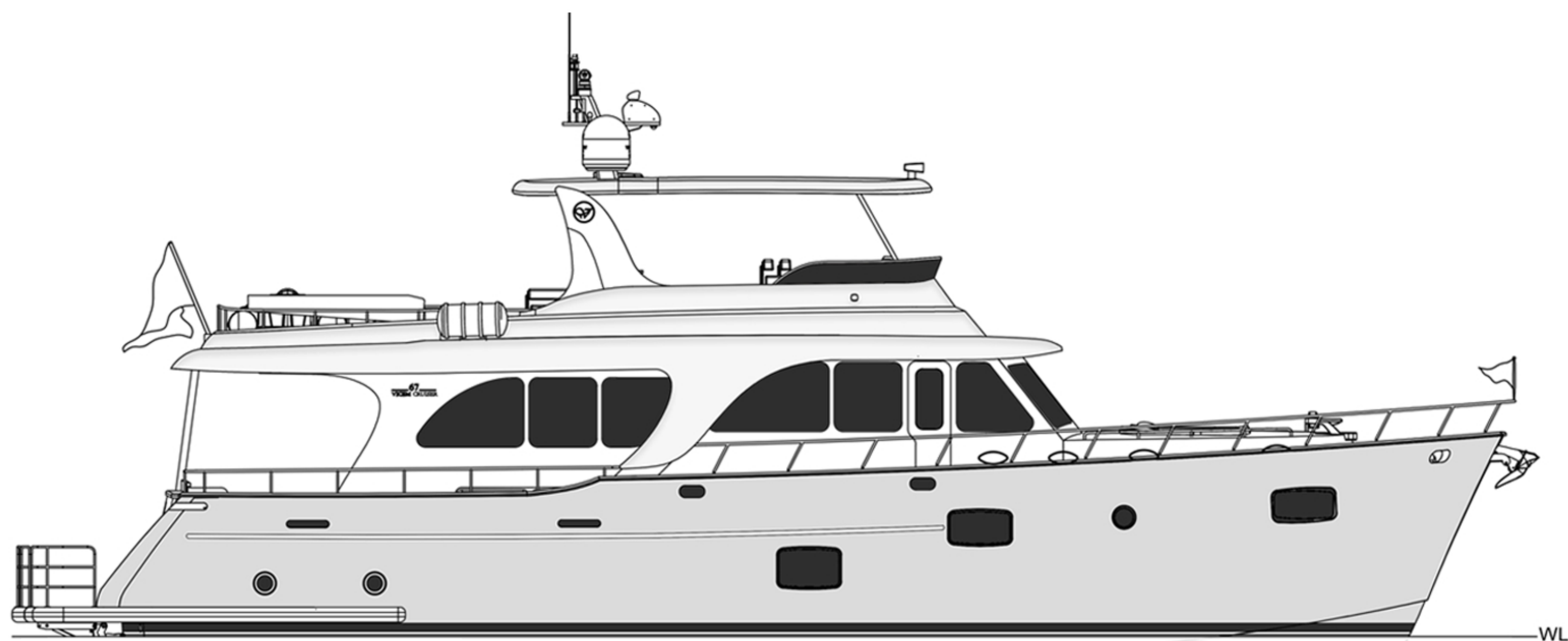
Fuel Capacity	: 8000 lt	2110 US Gallons
Fresh Water Capacity	: 1135 lt	300 US Gallons
Black & Grey Water Capacity	: 900 lt	240 US Gallons

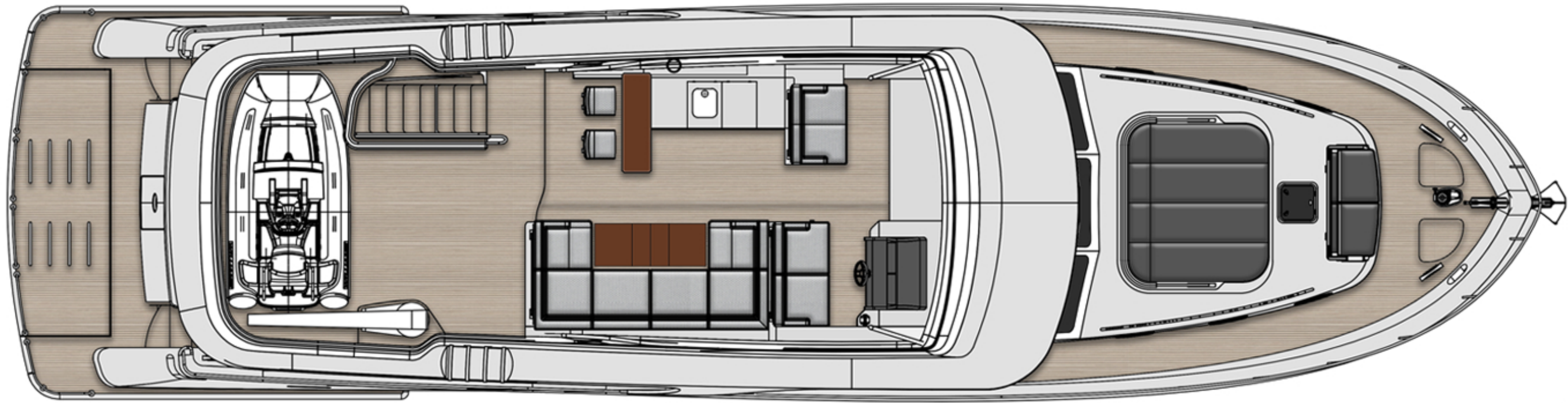
Machinery

Main Engines	: (2) Volvo Penta D13 1000HP
Main Engine Power	: (2) 1000HP (735 kw) @ 2400 RPM
Propulsion System	: (2) Conventional Shaft Drives
Main Engine Controls	: (2) Volvo Penta System Controls
Generator Set	: (1) Onan 21,5 kW MDKDR 21,5 Kw/60Hz
Electrical	: 24V DC : 115/230V monophase , 60Hz AC

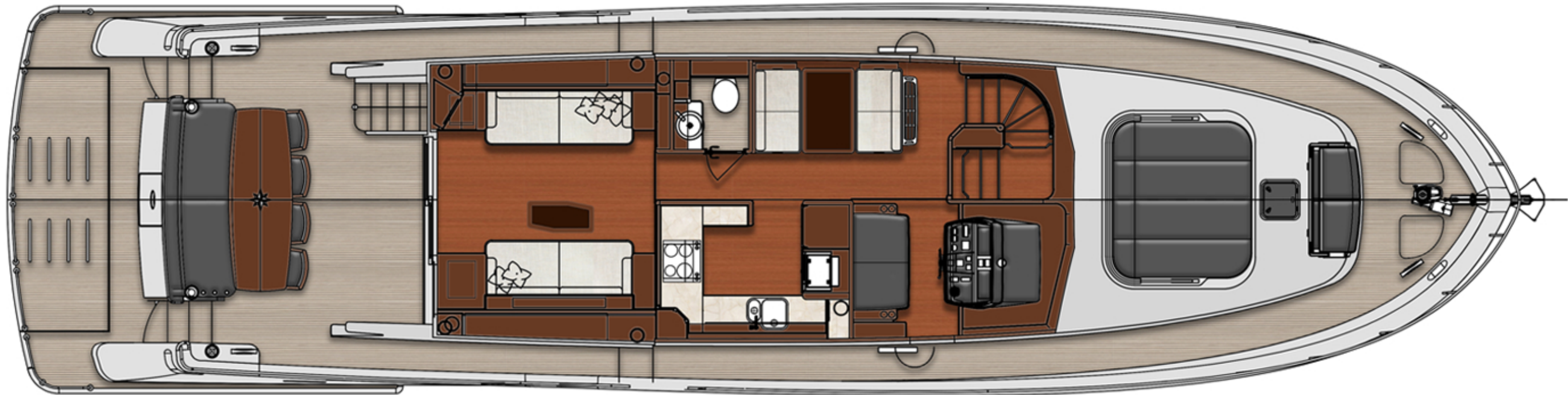
Design & Construction

Construction	: Cold Molded Mahogany with West Epoxy System
Hull Type	: V-Type Hard Chine - Semi Planning Hull
Exterior Paint System	: Awlgrip - AwlCraft 2000
Certification	: CE Design Category A / ABYC
Naval Architecture	: Vicem Yacht Design Team
Interior & Exterior Design	: Vicem Yacht Design Team
Builder	: Vicem Shipyard, Istanbul - Turkiye
Model Year	: 2020

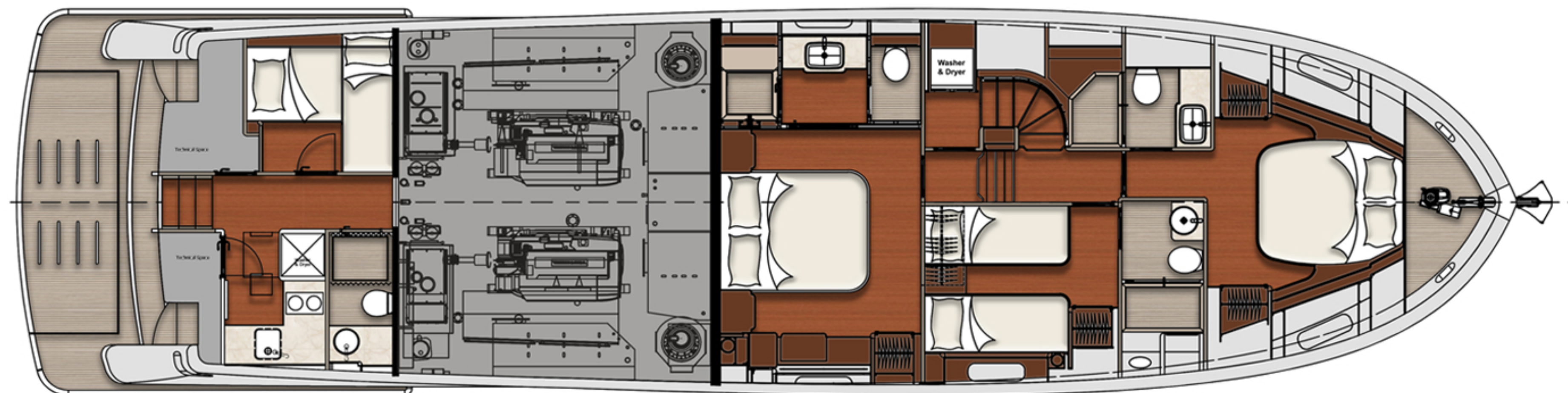




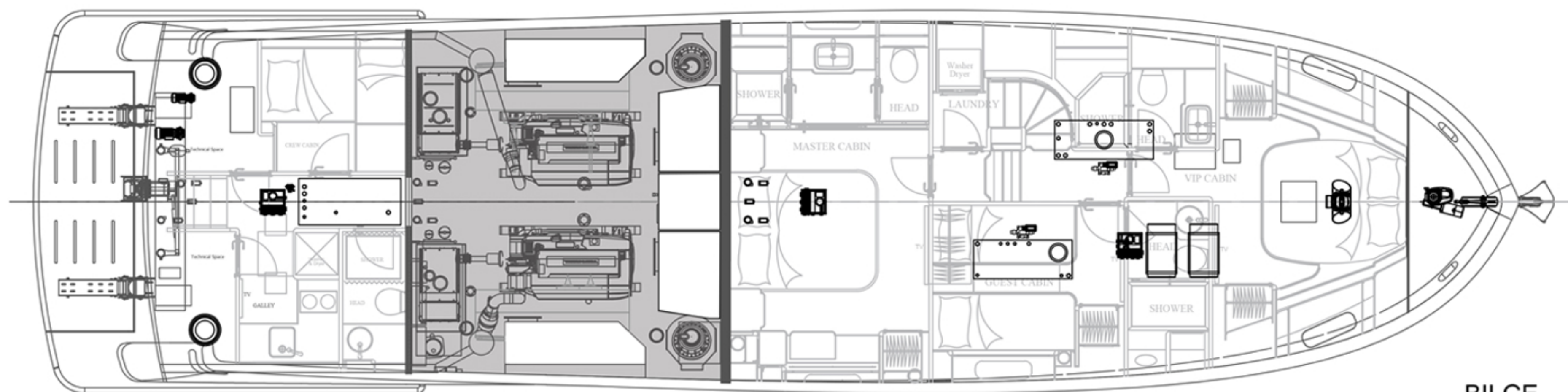
FLYBRIDGE



MAIN DECK



LOWER DECK



BILGE











